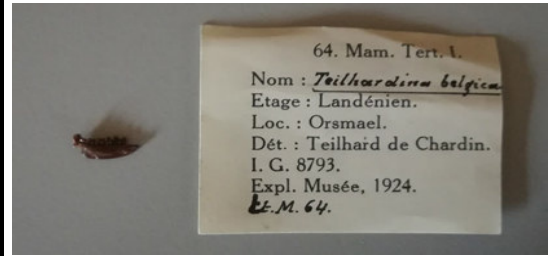


Scan officer : Lefèvre Ulysse  
 Email : ulefevre@naturalsciences.be  
 Phone : 02 788 76 08  
 Datum : 15th of February 2018

**IRSNB M64**



**COLLECTION**

Paleontology  
 Type of collection : Fossil

**SETTINGS**

SOURCE

Focal spot : Small  
 Tube power (W) : 10  
 Tube voltage (kV) : 146  
 Tube current (uA) : 69  
 Filter : Copper

IMAGER

Mode : 1x1 0.5 pF VG 1 (high resolution)  
 Frame rate : 12  
 Average frames : 10  
 Shift : No

TOMOGRAPHY

Type : Tomography  
 Anti ring shift : Yes  
 Options : Continuous  
 Number of images : 1440  
 Turns : 1  
 Zoom : 15.538  
 Voxel size (µm) : 8.18  
 Volume height (mm) : 11.1  
 Volume diameter (mm) : 14.9  
 Slices : 1361  
 Estimated time (min) : 20

REMARKS